



Rural Development in Bavaria

A strong partner for a
strong rural area



Bavaria worth living



Bavaria's rural area is vital, attractive and worth living in – and it should remain this way. People everywhere expect both equivalent living conditions and working conditions. That's why we are working on this together with the communities and citizens. Every second community in Bavaria relies on our customized support and competence from a single source. With the numerous projects of Integrated Rural Development and Community Development, with Village Renewal and Land Consolidation, we shape and develop rural areas on the way into a good future.

Diverse regions with great potential – this is how we implement our political mission in Bavaria

The Bavarian Administration for Rural Development is very successfully fulfilling its mission to sustainably strengthen rural areas with their villages and landscapes and to create equal living conditions for people throughout Bavaria. Approximately



1 150 employees of our seven Offices for Rural Development provide future-oriented support as geodesists, agricultural engineers, architects, landscape planners, civil engineers, lawyers and administrative specialists.

The service areas of our Offices in Munich, Landau a.d.Isar, Tirschenreuth, Bamberg, Ansbach, Würzburg and Krumbach each cover the administrative districts with their counties, all cities and communities. With the rural development projects, our Offices support the communities and regions, agriculture and forestry, help with the realisation of public projects and protect the natural foundations of life. For that, the Offices use their diverse instruments and, above all through intensive citizen participation and Land Regulation enable solutions to be found that are precisely adjusted to local needs.

Our Offices are currently working on around 2,400 projects. Their staff members are competent partners for citizens and communities and jointly strengthen villages, landscapes and regions. This publication is intended to highlight the diverse, future-oriented and sustainable services for rural areas in Bavaria.

A handwritten signature in black ink, appearing to read 'M. Kaniber'.

*M. Kaniber
Bavarian Minister of State for
Food, Agriculture and Forestry*

Rural areas face major challenges – in this way our projects support sustainable developments

The rural area with its varied cultural landscapes is home to half of the Bavarian population. However, it faces great challenges. These include structural change in agriculture, demographic change and the protection of our natural resources. Climate change is also becoming increasingly tangible, e. g. through long periods of drought on the one hand and heavy rainfall with subsequent flooding on the other hand. At the same time, it is important to develop existing potentials, strengthen our own resources and make use of new opportunities such as digitalisation and the energy transition.

The Offices develop customized solutions together

That our children can also live in a vital rural area,

- ◆ we develop vital villages and communities
- ◆ we support intermunicipal developments
- ◆ we strengthen agriculture and forestry
- ◆ we protect the natural foundations of life and create cultural landscapes
- ◆ we contribute to the stimulation of the economy and employment
- ◆ we create efficient road and path networks

To this end, the Offices offer customized development approaches, implementation strategies and subsidies to communities, citizens, landowners, farmers and economic partners in rural areas.



We offer an extensive range of services

Depending on the initial situation and the task at hand, the Offices use the appropriate instrument:

- ◆ Integrated Rural Development
- ◆ Community Development
- ◆ Village Renewal
- ◆ Land Consolidation
- ◆ Land consolidation for expanded land development projects
- ◆ Rural Road and Path Construction
- ◆ Voluntary Land Exchange

We build on three basic principles

- ◆ We rely on intensive citizen participation, on the creativity and initiative of each individual and mobilise their own strengths in the region, in communities and villages. Our theme: thinking, planing and shaping.
- ◆ We offer planning, approval, coordination, financing, implementation and surveying from a single source. In projects under the Land Consolidation Act, many responsibilities are transferred to the local community of participants, which are all landowners in the planning area.
- ◆ Our soil management and land management are of main importance. The Offices rearrange land where different interests and demands for use meet. This way land use conflicts can be resolved and sustainable developments for the future of rural areas are made possible.

The active participation of the citizens creates a sustainable identification with the habitat and is the guarantor for vital and livable communities. That is why we involve the citizens intensively in all tasks from the very beginning. This makes rural areas fit for the future.



Valuing regional peculiarities



The diversity and beauty of the Bavarian cultural landscape with its numerous low mountain ranges, formative river and brook valleys, the Alps, fertile agricultural landscapes, forest areas, villages and towns must be preserved. Rural Development creates a balance between economic, ecological and social requirements when it comes to future-oriented design. At the same time it strengthens rural areas as vital living and economic areas.

How we strengthen the diversity of rural areas in Bavaria

About one third of Bavaria is covered with forest, almost half of its area is used for agriculture. The cultural landscape is characterised by the production of a wide variety of products. The customs, the way of life and the language in Bavaria are also colourful.

Just as diverse as the regions of Bavaria and the needs of the people living there are the demands made on the services of the Administration for Rural Development. Together with communities and citizens, our Offices want to preserve and develop the identity of the village, landscape and region. The spectrum of our services ranges from Voluntary Land Exchange between two or three farmers to the support of large-scale projects, from measures in villages and fields to cross-community cooperation.

Every second community relies on our support

Our Offices currently manage around 2.400 projects, creating attractive living and working conditions for citizens. Almost 2.200 villages are currently being designed with over 1.200 Village Renewals. More than 700 land reparcelling projects are being carried out to rearrange properties and enrich the landscape. In addition, there are around 110 Integrated Rural Developments with almost 900 communities to strengthen regions and more than 80 rural road and path construction projects. As competent partners of citizens and communities, our staff shapes and strengthens rural areas and balances land use interests with the possibilities of land management.

Competence from a single source – the Offices for Rural Development are reliable partners: We accompany citizens, farmers and communities with customized support in planning, promotion and the implementation of their future projects.



Developing regions across communities

More and more communities realize that many of their problems can be solved better in fellowship with other communities. With Integrated Rural Development we support the objectives of the communities by joint development concepts. At the same time, the implementation of Village Renewal and Land Consolidation or other programmes is coordinated in a targeted manner. The fields of action are diverse and pick up current challenges.

Strengthening villages and their centres

Through Village Renewal and Community Development we improve the location quality and the living conditions in the communities and villages. In this way we strengthen the rural areas as a whole. Demographic change and structural changes in agriculture, business, trade and crafts increasingly leave vacant buildings and unused open spaces in the historic village centres. The result is a decline in the value of real estate and underutilised or missing infrastructure facilities. With Village Renewal, we revitalise the village centres, strengthen inner development and help to save space. To this end, we promote the conversion and reuse of vacant buildings, the provision of basic services and community life in order to sustain the village identity.

Creating sustainable farmland

The quality of life and the cultural landscapes with their valuable habitats are closely linked to rural agriculture and forestry. Through Land Consolidation we help farmers to improve their competitiveness, reduce working hours and save costs.



To this end, plots of land are consolidated into economic units, efficient roads are built and the different interests of farmers, landowners and the public sector are balanced. At the same time, Land Regulation is aimed at saving land and conserving resources because land and soil are not expandable.

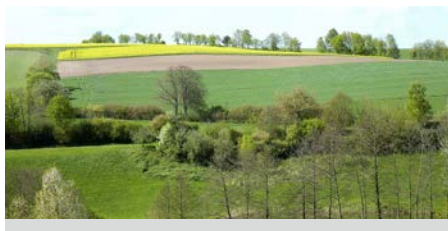
Landscape design, resource conservation, biodiversity conservation

The conservation and design of cultural landscapes and the protection of natural resources are our primary concerns regarding the projects of the Rural Development. Challenges such as flood protection and energy transition cannot be mastered without changes in the landscape. The protection of habitats for animals and plants, the soil, water bodies and groundwater, and adaptation to climate change are further challenges facing Rural Development.

A strong partner for rural areas

Rural Development in Bavaria, with its Offices in rural areas as a network architect and provider of ideas, is always on hand when different interests need to be united. With our staff, citizens and communities in rural areas find competent partners who accompany them from the idea to its implementation. Planning, financing, Land Regulation and the implementation from a single source – we are well prepared for the challenges in the rural areas of Bavaria.

Communities use Integrated Rural Development to strengthen their region and implement concepts for the future through Village Renewal and Land Consolidation. Soil management is the key to sustainable community development and value creation in rural areas.



Rural Development in Bavaria

Bavarian State Ministry of Food, Agriculture and Forestry

Ludwigstraße 2 · D-80539 München

Phone +49 089 2182-0 · Fax -677

landentwicklung@stmelf.bayern.de · www.landentwicklung.bayern.de



Offices for Rural Development

Oberbayern

Infanteriestraße 1 · D-80797 München

Phone +49 089 1213-01 · Fax -1406

poststelle@ale-ob.bayern.de

Mittelfranken

Philipp-Zorn-Straße 37 · D-91522 Ansbach

Phone +49 0981 591-0 · Fax -600

poststelle@ale-mfr.bayern.de

Niederbayern

Dr.-Schlögl-Platz 1 · D-94405 Landau a. d. Isar

Phone +49 09951 940-0 · Fax -215

poststelle@ale-nb.bayern.de

Unterfranken

Zeller Straße 40 · D-97082 Würzburg

Phone +49 0931 4101-0 · Fax -250

poststelle@ale-ufr.bayern.de

Oberpfalz

Falkenberger Straße 4 · D-95643 Tirschenreuth

Phone +49 09631 7920-0 · Fax -601

poststelle@ale-opf.bayern.de

Schwaben

Dr.-Rothermel-Straße 12 · D-86381 Krumbach

Phone +49 08282 92-0 · Fax -255

poststelle@ale-schw.bayern.de

Oberfranken

Nonnenbrücke 7 a · D-96047 Bamberg

Phone +49 0951 837-0 · Fax -199

poststelle@ale-ofr.bayern.de





Rural Development in Bavaria

Bavarian State Ministry of Food, Agriculture and Forestry

Rural Development in Bavaria

Ludwigstraße 2 · D-80539 München

www.landentwicklung.bayern.de